

B $\flat$  sax

# Eduard

Marco Tamburini

Intro (piano improv)

Cmaj7(#11)/B

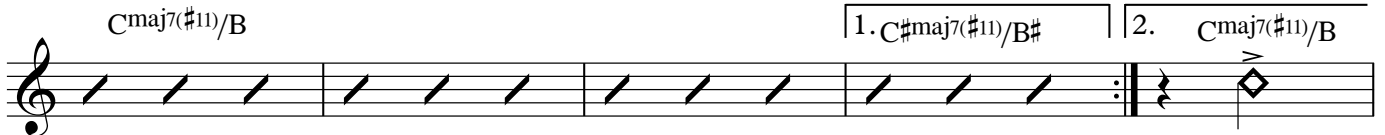
C#maj7(#11)/B#



Cmaj7(#11)/B

1. C#maj7(#11)/B#

2. Cmaj7(#11)/B



**A**

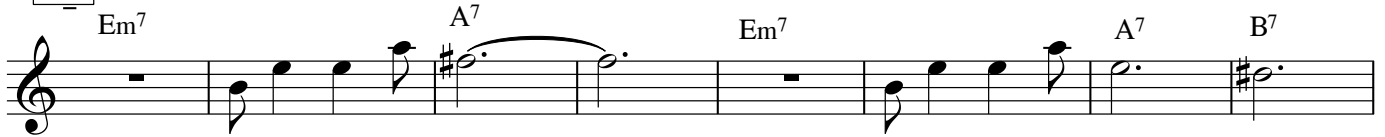
Em<sup>7</sup>

A<sup>7</sup>

Em<sup>7</sup>

A<sup>7</sup>

B<sup>7</sup>



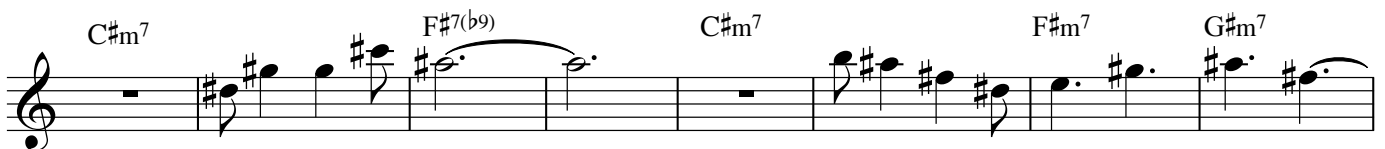
C#m<sup>7</sup>

F#7(b9)

C#m<sup>7</sup>

F#m<sup>7</sup>

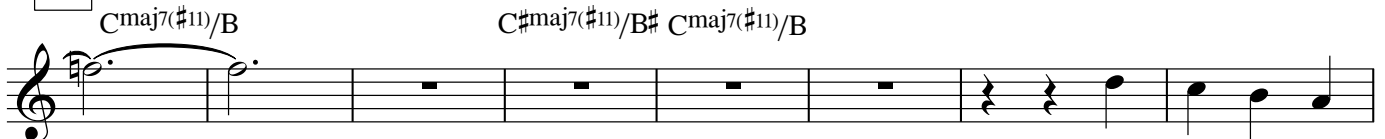
G#m<sup>7</sup>



**B**

Cmaj7(#11)/B

C#maj7(#11)/B# Cmaj7(#11)/B



G#m<sup>7</sup>

Gmaj7(#11)



**C**

Gm<sup>7</sup>

C#m<sup>7</sup>

C<sup>7</sup>

Gm<sup>7</sup>

F#m<sup>7</sup>

B7(b9)



Em<sup>7</sup>

F#m<sup>7</sup>

E $\flat$ 7(sus4)

F7(#11)

