

Yesterday Night

Str. in C

M. Tamburini

Ballad

$\text{♩} = 60$

A Cm9

D \flat 7(#11)

Cm11

B \flat M7(#11)

G7(#9)



Cm9

D \flat 7(#11)

Cm11

B \flat m7

E \flat 7



B

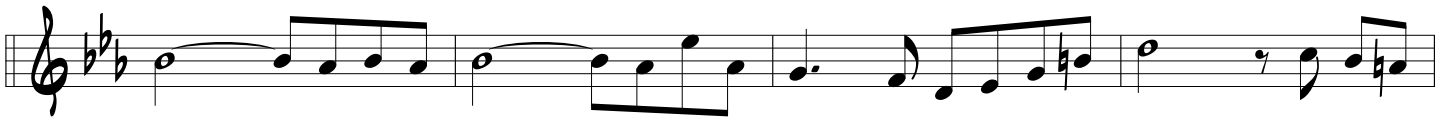
A \flat Maj7

G7(#9)

Cm7

Cm(maj7)

F7(#11)



E \flat Maj7

Dm11

G7

C \flat Maj7

A \flat Maj7

Dm11

G7(#9)



Coda

D \flat 11

G7(#9)

